



# Stephanie Peat

HELPING YOU MAKE YOUR BEST MOVE



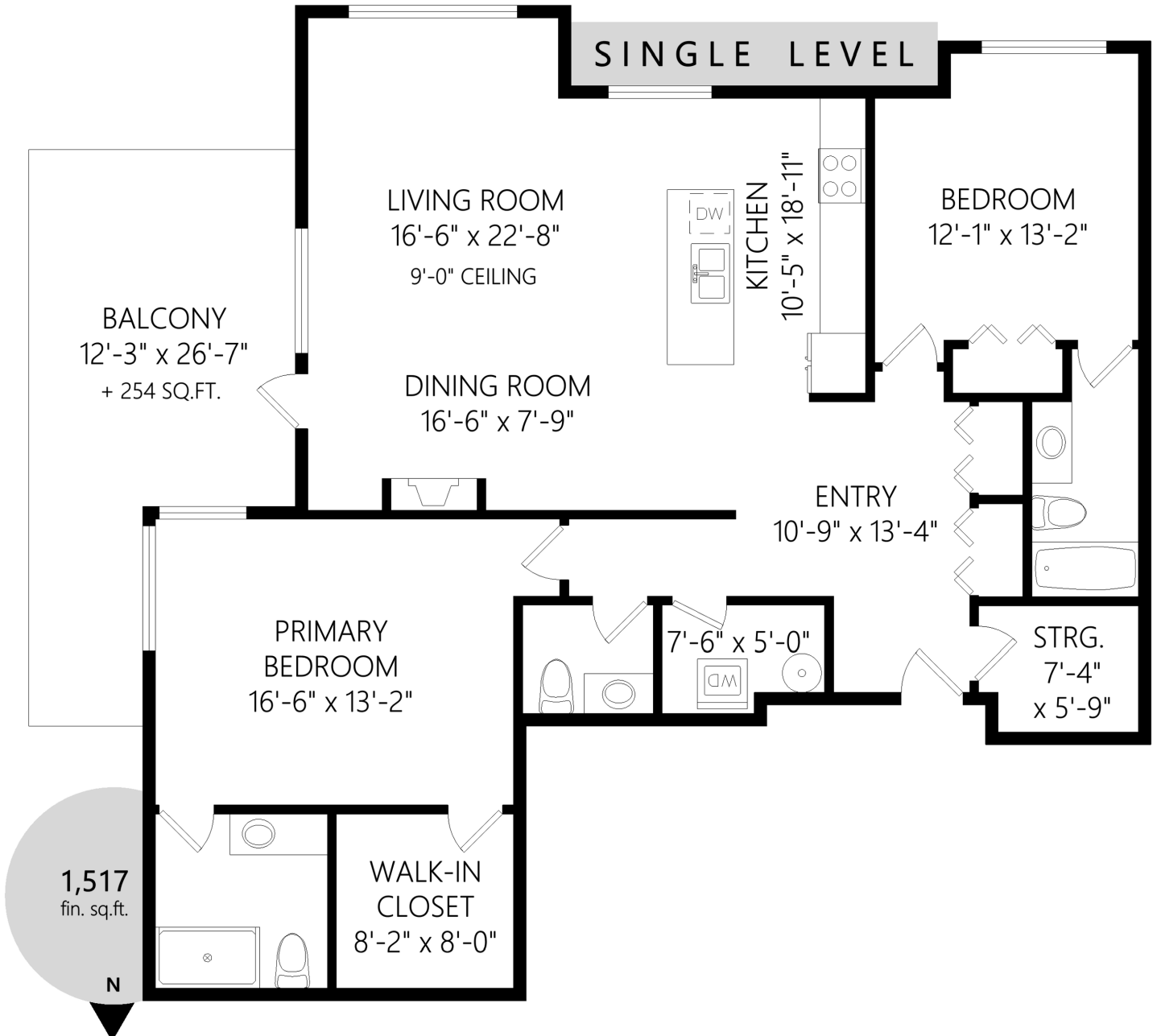
info@stephaniepeat.ca <http://www.stephaniepeat.ca>



Be sold on expertise.

Office: (250) 656-0131

Direct: (250) 920-8524



Area (Sq.Ft.)	Finished	UnFin.	Total
Single Level	1,517	0	1,517

402-2409 Bevan Ave

Shown length and width dimensions are approximate.  
Area (Sq.Ft.) is representative of the footprint, including walls and structure.

No representation or warranty, express or implied, is made to the accuracy or completeness of the information provided (figures, illustrations, etc.). Users are responsible for verifying the information before acting on it.

