



# Stephanie Peat

HELPING YOU MAKE YOUR BEST MOVE



Be sold on expertise.

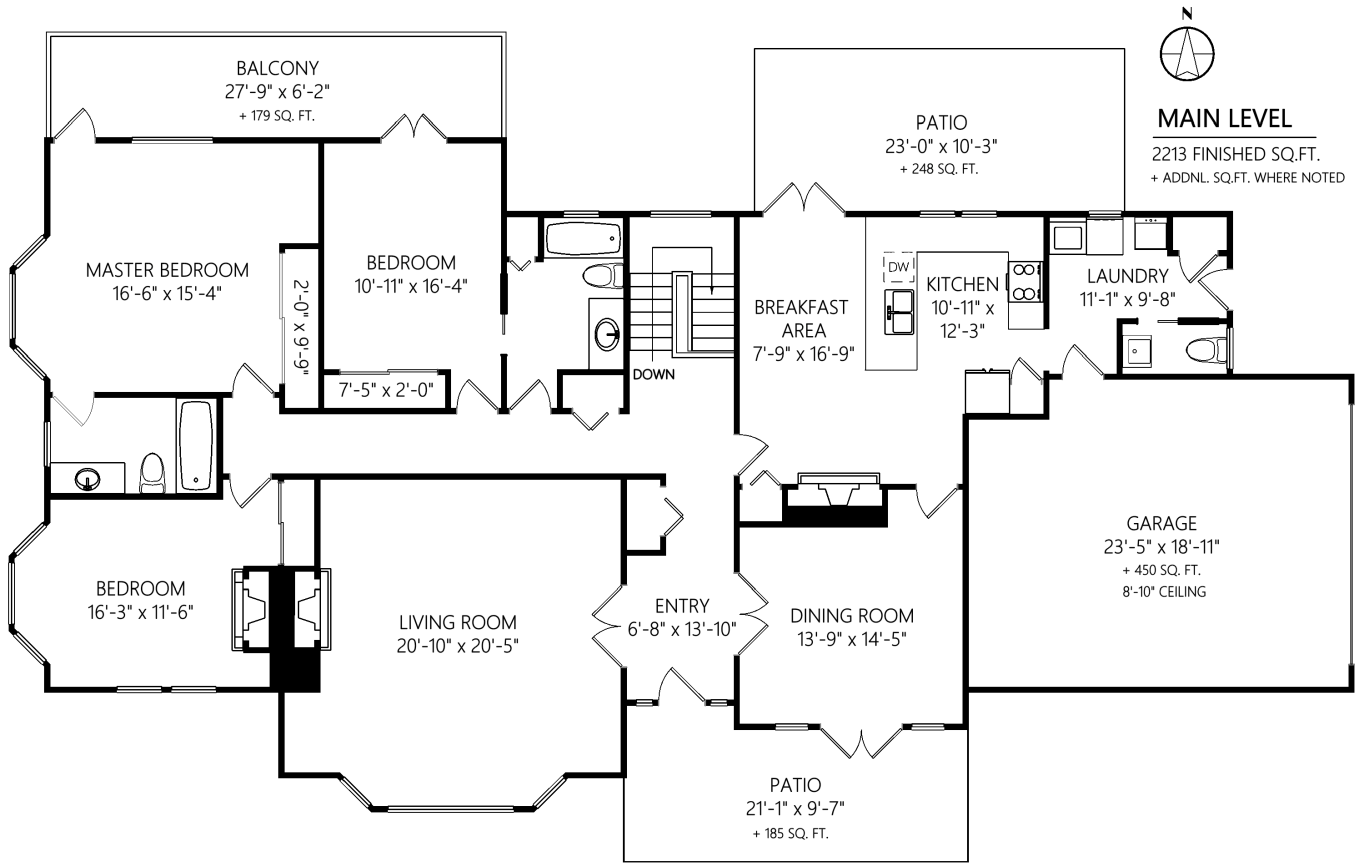


info@stephaniepeat.ca <http://www.stephaniepeat.ca>

Office: (250) 656-0131

Direct: (250) 920-8524

1290 Maple Rd



### MAIN LEVEL

2213 FINISHED SQ.FT.  
+ ADDNL. SQ.FT. WHERE NOTED

	Fin. Sq.Ft.	UnFin. Sq.Ft.	Total Sq.Ft.
Main Level	2213	0	2213
Garage	0	450	450
Lower Level	45	989	1034
<b>Total</b>	<b>2258</b>	<b>1439</b>	<b>3697</b>

Shown length and width dimensions are approximate.  
Area sq.ft. is representative of the on-site measurements. (1" accuracy)



Figures, Calculations, and Representations are for indicative and promotional purpose only.  
VI Standard Real Estate Services Inc. will not be liable for any damages of any kind arising from the mis-use of this information.



# Stephanie Peat

HELPING YOU MAKE YOUR BEST MOVE



info@stephaniepeat.ca <http://www.stephaniepeat.ca>



Be sold on expertise.

Office: (250) 656-0131

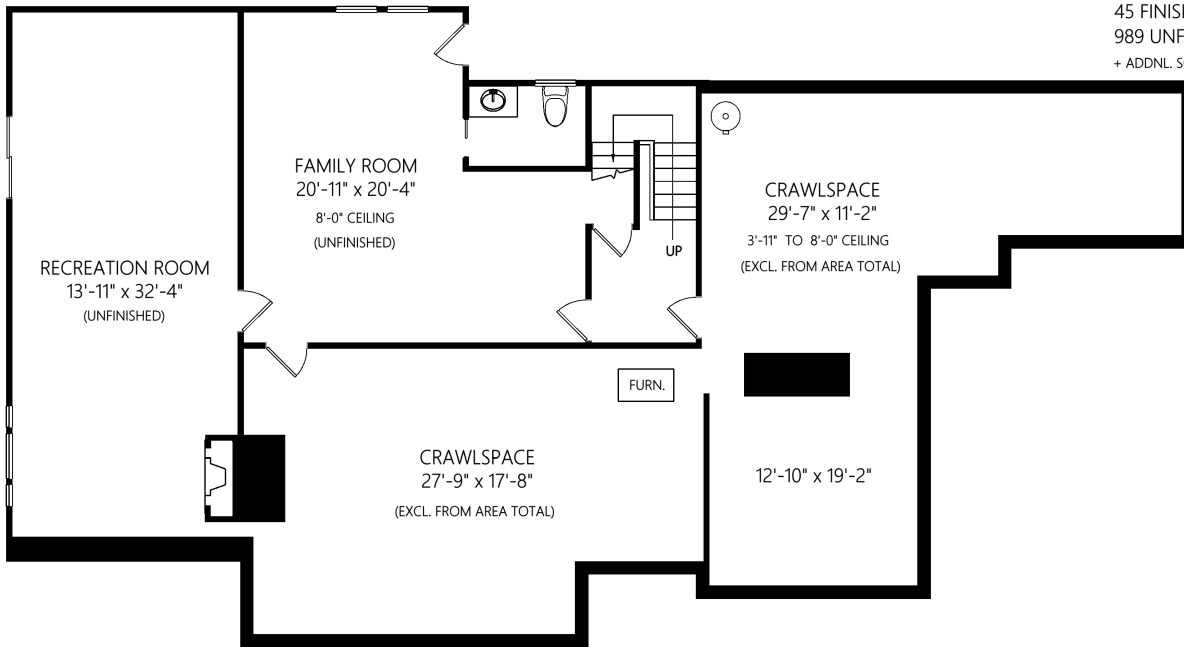
Direct: (250) 920-8524

1290 Maple Rd



### LOWER LEVEL

45 FINISHED SQ.FT.  
989 UNFINISHED SQ.FT.  
+ ADDNL. SQ.FT. WHERE NOTED



	Fin. Sq.Ft.	UnFin. Sq.Ft.	Total Sq.Ft.
Main Level	2213	0	2213
Garage	0	450	450
Lower Level	45	989	1034
<b>Total</b>	<b>2258</b>	<b>1439</b>	<b>3697</b>

Shown length and width dimensions are approximate.  
Area sq.ft. is representative of the on-site measurements. (1" accuracy)



Figures, Calculations, and Representations are for indicative and promotional purpose only.  
VI Standard Real Estate Services Inc. will not be liable for any damages of any kind arising from the mis-use of this information.